

# New Faculty Academy Orientation

August 15, 2023

Hosted by the Office of the Vice Provost for Faculty  
and the Office of Faculty Professional Development

# Office of Faculty Professional Development

**Dr. Rebecca  
Pope-Ruark,  
Director**



# Tips for the Day

Restrooms past food and to the right

Terrace for fresh air past food to back of building

Coffee – Blue Donkey, first floor of Price Gilbert Library

Folder has materials for the day, which will all be available online this week

Jocelyn Lopez – registration desk

# Dean of Libraries

**Dr. Leslie  
Sharp**





# Vice Provost for Faculty

**Dr. Michelle  
Rinehart**



Provost

**Dr. Steve  
McLaughlin**



# Associate Vice Provost for Faculty

**Dr. Dawn  
Baunach**



# Values and Mission

## VALUES

Students are our top priority.

We strive for excellence.

We thrive on diversity.

We celebrate collaboration.

We champion innovation.

We safeguard freedom of inquiry and expression.

We nurture the well-being of our community.

We act ethically.

We are responsible stewards.

These values are foundational to everything we do, and they define who we are and who we aspire to be as a community.

[Living Our Values Every Day \(L.O.V.E. GT\) campaign](#)

## MISSION

The Georgia Institute of Technology is a public research university established by the state of Georgia in Atlanta in 1885 and committed to *developing leaders who advance technology and improve the human condition.*

## STRATEGIC PLAN

### Progress and Service for All

- Amplify Impact
- Champion Innovation
- Connect Globally
- Expand Access
- Cultivate Well-Being
- Lead by Example

# Georgia Tech At-A-Glance

## Academic

- College of Computing
- College of Design
- College of Engineering
- College of Sciences
- Ivan Allen College of Liberal Arts
- Scheller College of Business
- Georgia Tech Library
- Georgia Tech Professional Education



## Applied Research

**Georgia Tech Research Institute (GTRI)**  
Market-focused translational research



## Innovation & Entrepreneurship

Innovation eco-system: students, start-ups, businesses, researchers, economic impact



**Georgia  
Tech.**



# Snapshot

## Employees, August 2023

**11,081** Total Employees  
(not including students)

**2,319** Academic Faculty  
**2,528** Research Faculty

**5,029** Staff  
**6,469\*** Students

*\*includes about 2,852 graduate research and teaching assistants, the rest are undergraduate student assistants*

## Students, 2021-2022

Undergraduate Students  
**18,779** Total

**62%** Georgia  
**40%** Women

Graduate Students  
**26,089** Total  
**17,913** Online

**46%** International  
**28%** Women



# Organization – President

## President Ángel Cabrera

### Executive Leadership Team

- Academics, Research, Administration & Finance, Strategic Initiatives

### President's Cabinet

- Athletics; Communications; Development; Diversity, Equity, and Inclusion; Education and Learning; Ethics and Compliance; GTRI; Human Resources; Information Technology; Institute Relations; Student Engagement and Well-Being



# Organization – Executive Vice Presidents

## Provost - Steven McLaughlin



Six Colleges, Library, Professional Education  
Faculty Affairs, Graduate Studies, Center for Teaching and Learning, Undergraduate Education, International Initiatives, Enrollment Services, Center for 21<sup>st</sup> Century Universities

## Research - Chaouki Abdallah



Georgia Tech Research Institute, Georgia Tech Research Corporation, Office of Sponsored Programs, Enterprise Innovation Institute, Interdisciplinary Research Institutes (11) and Centers (12), Office of Industry Collaboration

## Administration and Finance – Shantay Bolton



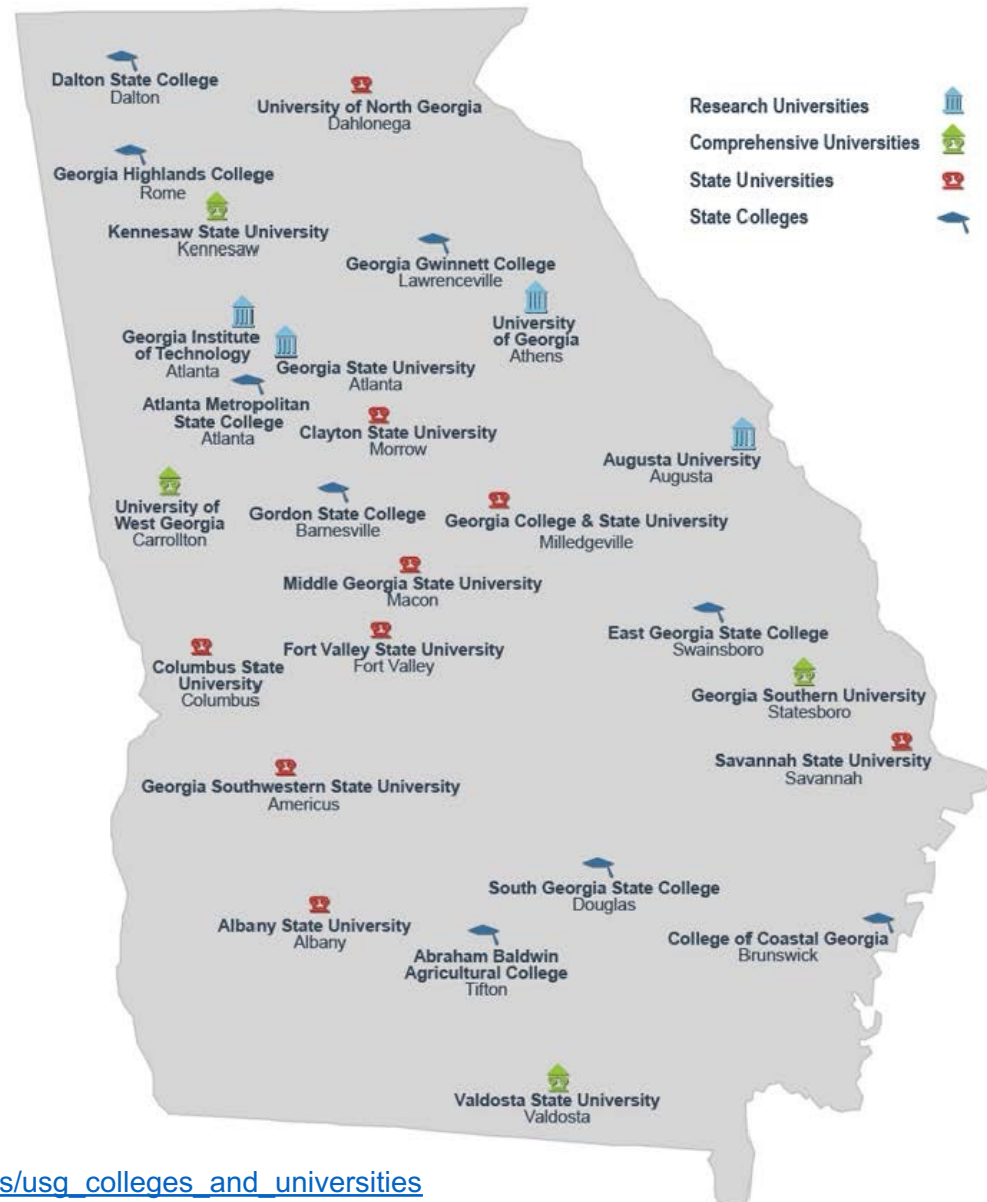
Campus Services; Office of Information Technology; Human Resources; Real Estate Development; Sustainability, Facilities, and Safety; Institute Planning and Resource Management

# University System of Georgia

The [Board of Regents](#), together with the Chancellor, oversee the [University System of Georgia](#). The USG has 26 institutions in total, including 4 research universities, 4 comprehensive universities, 9 state universities, and 9 state colleges.

The **research universities** offer a range of academic programs at the baccalaureate, masters, and doctoral levels and have a commitment to wide-ranging research, scholarship, and creative endeavors that are consistent with the highest standards of academic excellence.

The four research universities are *Augusta University*, *Georgia Institute of Technology*, *Georgia State University*, and *University of Georgia*.



# Welcome to Atlanta

The greater Atlanta region is comprised of 10 counties and has a population of 4.7 million. The [City of Atlanta](#) has a population of half a million and is characterized by over 200 recognized neighborhoods. The mayor of Atlanta, [Andre Dickens](#), is a Tech alum.



Atlanta has many museums – including the [High Museum of Art](#) and the [National Center for Civil and Human Rights](#) – and great parks, such as [Piedmont Park](#) which was designed by Olmsted. A key player in the Civil Rights Movements of the 1950s and 1960s, Atlanta is also home to the [Martin Luther King Jr. National Historic Park](#). The John Lewis mural (left) can be found on Auburn Avenue, just 2 miles from campus. Tech's new [Student Center](#) is named for John Lewis. Atlanta's 33 miles long [Beltline](#) was designed by a Tech alum.



# 10 Things in Common

- Write down five facts about yourself personally
- Write down five facts about yourself professionally

# 10 Things in Common

- Write down five facts about yourself personally
- Write down five facts about yourself professionally
- Find at least one person who you have something in common with for each of your items - write down names, email addresses



# 10 Things in Common

- Write down five facts about yourself personally
- Write down five facts about yourself professionally
- Find at least one person who you have something in common with for each of your items - write down names, email addresses

What surprised you about meeting your colleagues?  
What might you reach out to someone you met about?

# 15-Minute Break

# Faculty Experience

Breakouts:

Two 20-minute sessions

- Table 1 Faculty of Color/DEI
- Table 2 Women+ Faculty
- Table 3 Office of Sponsored Programs
- Table 4 Entrepreneurship & Commercialization
- Table 5 Teaching Tour of GT
- Table 6 Community Outreach

# Choose Your Session

## **Research at Tech – The Research Enterprise (Crosland 7170)**

Dr. Rob Butera, Professor and Chief Research Operations Officer

Dr. Krista Walton, Professor and Associate Dean for Research, College of Engineering

## **Fostering Growth in Teaching (Crosland 4160)**

Dr. Amanda Nolen, Faculty Teaching and Learning Specialist, Center for Teaching and Learning

Dr. Vincent Spezzo, Assistant Director of Teaching and Learning Online, Center for Teaching and Learning

# Associate Vice Provost for Faculty

## **Dr. Rob Butera**

Professor of BME/ECE,  
Chief Research  
Operations Officer



## **Dr. Krista Walton**

Professor of ChBE,  
Associate Dean for  
Research, College of  
Engineering



# Research!

**Robert Butera**, Chief Research Operating Officer

[rbutera@gatech.edu](mailto:rbutera@gatech.edu)

**Krista Walton**, Associate Dean for Research and  
Innovation, College of Engineering

[krista.walton@coe.gatech.edu](mailto:krista.walton@coe.gatech.edu)

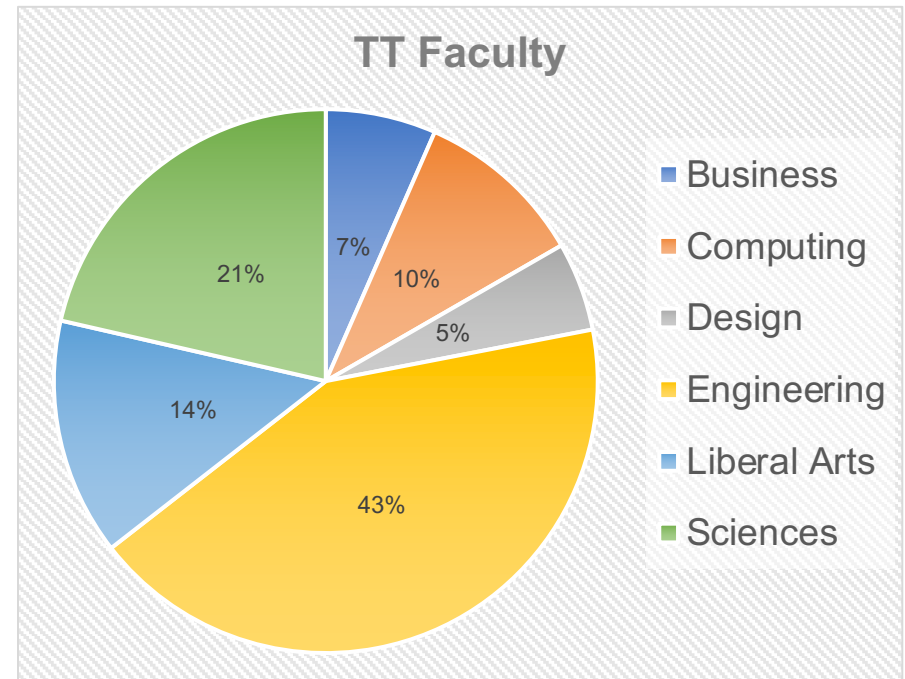


# Agenda

- Overview of research at Georgia Tech
- Colleges, Schools, and IRIs
- A brief organizational chart
- How to submit a grant
- PI responsibilities
- When proposals get big, complicated, or both
- What you need to know on one page, now

# Georgia Tech At A Glance (Spr 2023)

- 17000+ undergraduates
- 18000 online MS students
- 4000+ in-person MS Students
- 3500+ PhD students
- ~940 tenure track faculty
- Campuses in Metz, France and Shenzhen, China



- **Georgia Tech Research Institute** (~3000 employees, 20 locations)
- 10 Interdisciplinary Research Institutes

# Research Profile (FY23) – very diverse!

Sponsored Awards 1.454B

GTRI: 941M

Academic: 513M

Fiscal Year	Academic Awards (\$M)
2018	355
2019	407
2020	403
2021	416
2022	425
2023	513

+44.5%

Academic Sponsors	\$M	%
NSF	100.1	20
Industry Prime	69.1	13
DHHS/NIH	57.7	11
University subs (fed)	52.3	10
Industry (fed prime)	45.5	9
Commerce	34.7	7
Energy	25.6	5
Navy	21.1	4
NASA	16.1	3
Army	15.1	3
DoD	14.6	3
Air Force	13.4	3
State/Local Entities	10.7	2
Gov-owned Entities	10.5	2
Transportation	8.5	2

# Academic Organization – Colleges and Schools

- Departments (everywhere) else are “schools” at GT
- Schools are arranged into colleges, led by Dean
- Deans report to the Provost
- Schools hire tenure-track faculty, provide lab space, provide staffing for daily faculty support
- The school is your home and (almost) always provides your day-to-day support. (exception: EBB)

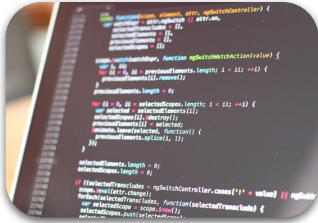
# IRI: Interdisciplinary Research Institutes

- Bring together faculty across campus according to broad thematic research themes
- Do not hire tenure-track faculty, but may provide lab space to them
- Some manage campus-wide core facilities
- Some hire research faculty
- Led by faculty appointed as Executive Directors, viewed as thought-leaders by leadership when thinking strategically about different research domains (along with colleges and schools)

# IRI Themes



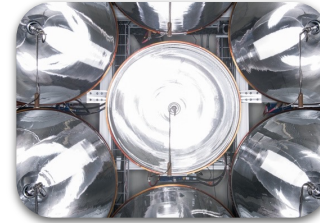
**Bioengineering and  
Bioscience**



**Data Engineering and  
Science**



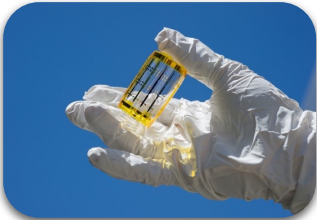
**Electronics and  
Nanotechnology**



**Energy**



**Manufacturing**



**Materials**



**People and  
Technology**



**Renewable  
Bioproducts**



**Robotics**

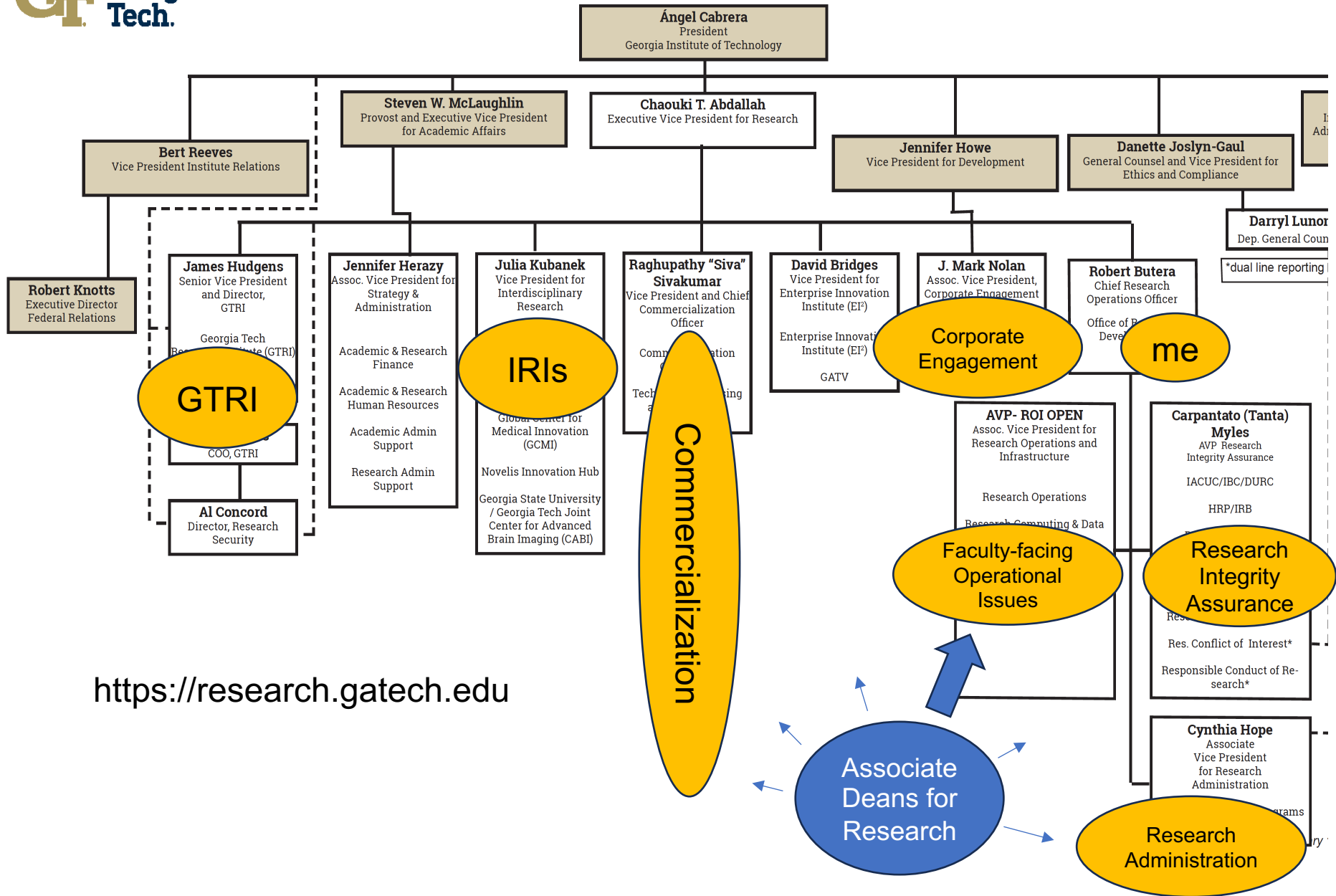


**Sustainable Systems**

For links to these organizations, go to  
<https://bit.ly/GT-VPiR> or scan the QR code







# Office of Sponsored Programs

## Gvt and Not-for-Profit Contracting Teams for Academic Units

- OSP has 4 of these teams
- Each has a Manager and 5+ Contracting Officers/Specialists
- They are assigned by college, provides consistency in relationships and workflow
- Engineering (Scott Niles)
- Sciences and Ivan Allen (Vanessa Daniels)
- Computing, Design, Business, all other non-GTRI units (Lakita Brooks)
- DoD direct contracts and industry flow-through of federal awards (Ashley Smith)

<https://osp.gatech.edu>

# Complicated Stuff

- Consult your Associate Dean for Research
- Research Operations (Gail Spatt) for exceptions and decisions: cost share, institutional commitments, limited submission, indirect cost reductions or waivers, tuition waivers, etc.
- Research Development (Rebecca Terns) – this team support large complex proposal efforts, typically \$10M or larger

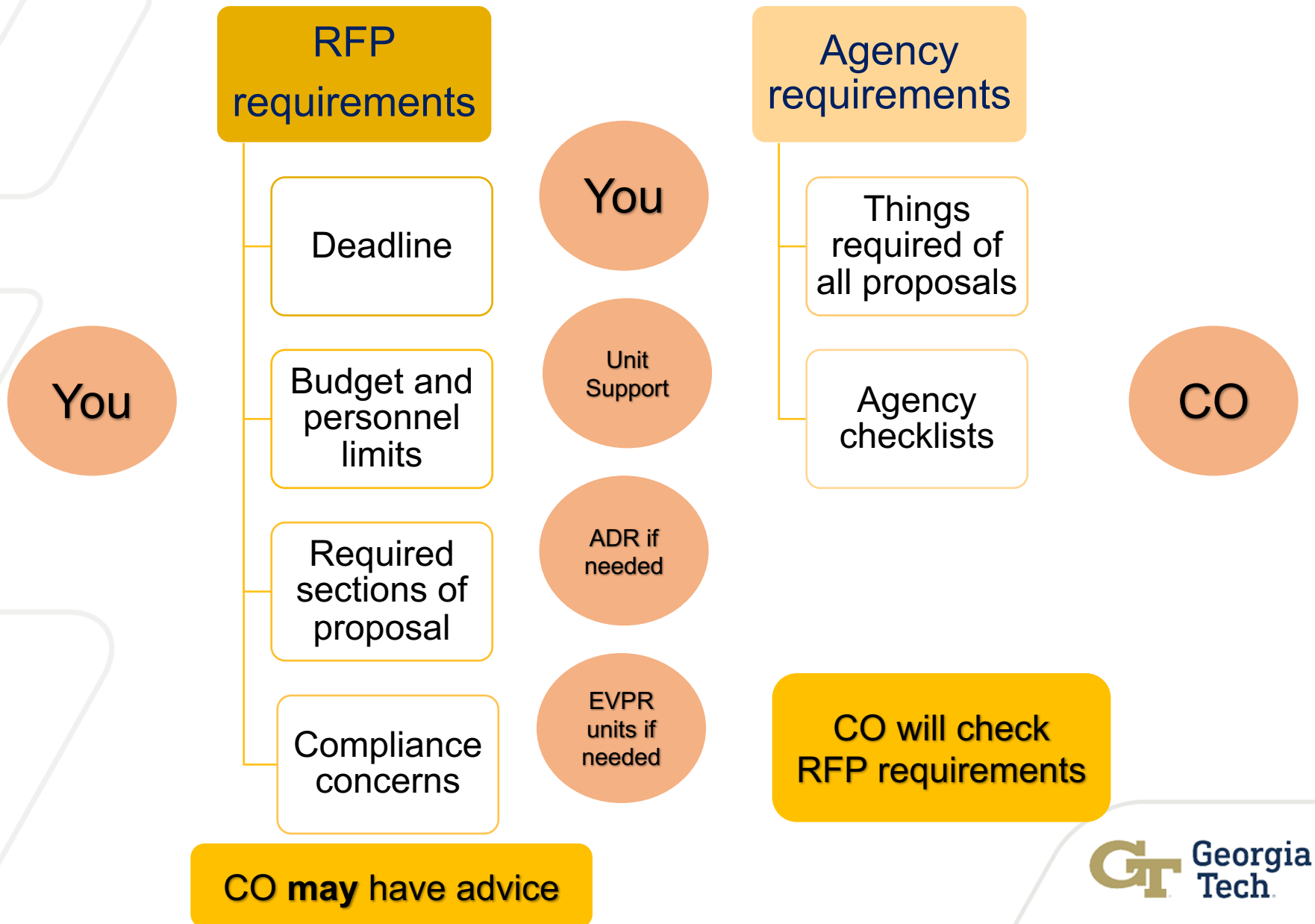
# The Grant Proposal Process

Hard Deadline  
(e.g. Nov 18 by 5pm EST)

(wait 3-12 months)



# “Your Job” vs “Their Job”



# Advice for those new to submitting

- The Contracting Officer (CO) and your school/college need to sign off on **completeness, compliance, and commitments** before it can be submitted. This cannot happen if submitted at 455pm with a 500pm deadline. In advance, get to know your Contracting Officer for the submission
- Discuss “who does what” with the staff in your unit.
- **Complete the non-technical aspects early.** What PIs typically find boring are the very items the contracting officers need to review closely. They would like to receive these earlier in the process.
- Consult with any GT/other commitments weeks-months ahead of time (eg. cost share, facilities, large IT)
- **You cannot sign anything on behalf of Georgia Tech, only an individual with “signature authority” can do that.** Although you are the PI, GT is the “grant recipient” and only GT can make institutional assurances to the sponsor.
- The PI needs to authorize initiation of subawards when a project is funded. This does not happen automatically.



# PI Responsibilities

- As determined by federal law and regulations
- Oversight of personnel, commitment of effort, review and allowability of expenses. If you don't know how these work, your school staff do – get to know them!
- Useful -> <https://grants.gatech.edu/pi-project-management-reference-manual>
- Unique situations worth mentioning (legal personal responsibility)
  - Export
  - J-1 visa sponsorship

# Information for future GT PIs

## Unit Level

- Learn who in your academic unit supports proposal and budget preparation
- Learn who your OSP “Government and Not-For-Profit Contracting” Team is ([www.osp.gatech.edu](http://www.osp.gatech.edu))
- Give your contracting officer in OSP advanced noticed of submission, get to know them
- **E-routing** is the system GT uses to route proposal *approvals* internally
- **Cayuse 424** is typically the system used to prepare the proposal and to submit to federal sponsors
- The PI Project Management Reference Manual describes PI responsibilities -> <https://grants.gatech.edu/pi-project-management-reference-manual>

## Institute Level

- The **Associate Dean for Research** *in your college* is the first point of contact for anything involving cost share or institute support
- The office of the **AVP-Research Operations and Infrastructure** manages seed grants and down-selection of limited submission competitions. They are also a point of contact for letters of support and F&A discussions (ask OSP first)
- The **Office of Research Development** assists faculty with very very large proposals (10M-100M)

# Getting to Know Georgia Tech's Faculty

## **Dr. Dan Amsterdam**

Associate Professor, History & Sociology

## **Dr. Gongjie Li**

Assistant Professor, Physics

## **Dr. Joe Bozeman**

Assistant Professor, Civil &  
Environmental Engineering

## **Dr. Danielle Willkens**

Associate Professor, Architecture

## **Dr. Ben Galfond**

Academic Professional, Chemical &  
Biomolecular Engineering



# Lunch

We will reconvene at 1:30.

# Senior Vice Provost for Education and Learning

**Dr. Larry  
Jacobs**



# Transformative Teaching and Learning at GT

## **Dr. Laura Carruth**

Director, Center for Teaching and Learning



## **Dr. David Lawrence**

Associate Director, Center for Teaching and Learning



## **Dr. Kate Williams**

Assistant Director for TA Development and Future Faculty Initiatives





# Session Goals

- What is Transformative Teaching and Learning and why is Tech invested in this initiative?
- How can new faculty engage with TTL now and in the future?





# Transformative Teaching and Learning

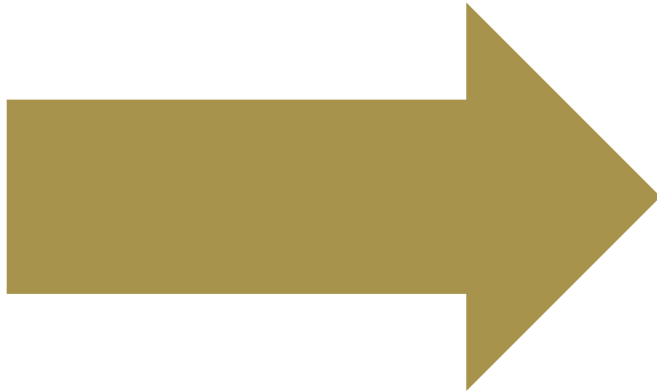
We will provide *all students* with **transformative learning experiences** to grow as creative, ethical, globally aware, technologically sophisticated leaders who can define and solve problems to improve the human condition.

GT Institute Strategic Plan  
Amplify Impact



# Putting the TTL Vision in Place





How would we recognize students who have had a transformative learning experience?

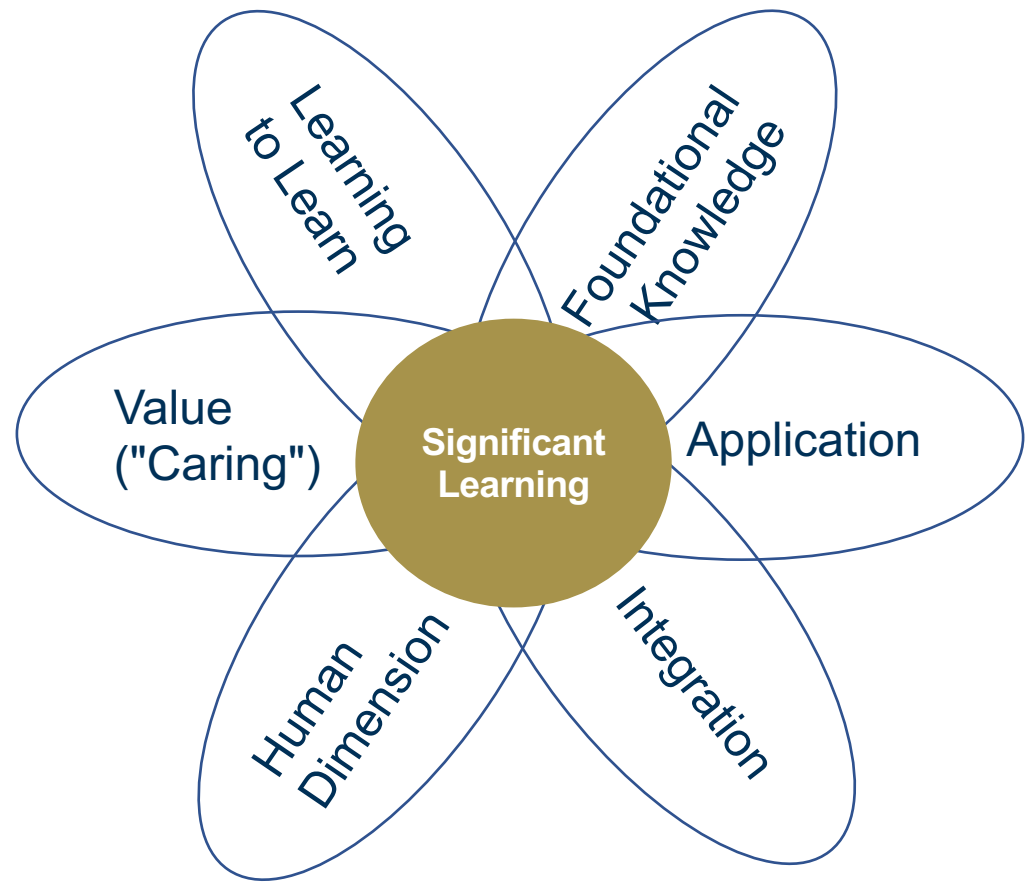
Affective | Behavioral | Cognitive



# Fink's Significant Learning

*Significant learning.*

learning that **actually**  
**changes** how a  
**student** lives their  
personal, social, civic,  
or professional life.



Positive Learning Environment





What conditions  
create transformative  
learning?

How would we recognize students who have had a  
transformative learning experience?

Affective | Behavior | Cognitive



# High Impact Practices (HIPs) create Significant Learning

1. Gathers previously disconnected (co)curricular programs into strategic learning initiatives
2. Supported by 20+ year of education research, led by AAC&U
3. "Learning by doing" has always been at the core of GT's identity
4. Reflection is key to experiential learning – and all other forms of learning!
5. **8 Key Elements of HIPs can be leveraged by any educator**

Experiential learning leads to more:

- Student confidence
- Student engagement
- Student retention
- Deep and integrated learning

*Especially for first generation and racially minoritized populations*



Office of Undergraduate Education

About ▾ Programs ▾ Initiatives ▾ Curriculum ▾ Communications ▾ Events

CONTACT US > WORK AT OUE >

## Experiential & Engaged Learning

Led by Dr. Christopher Reaves, Experiential and Engaged Learning oversees the delivery, data-driven assessment, and continuous improvement of undergraduate high-impact learning initiatives in partnership with campus partners and academic units.



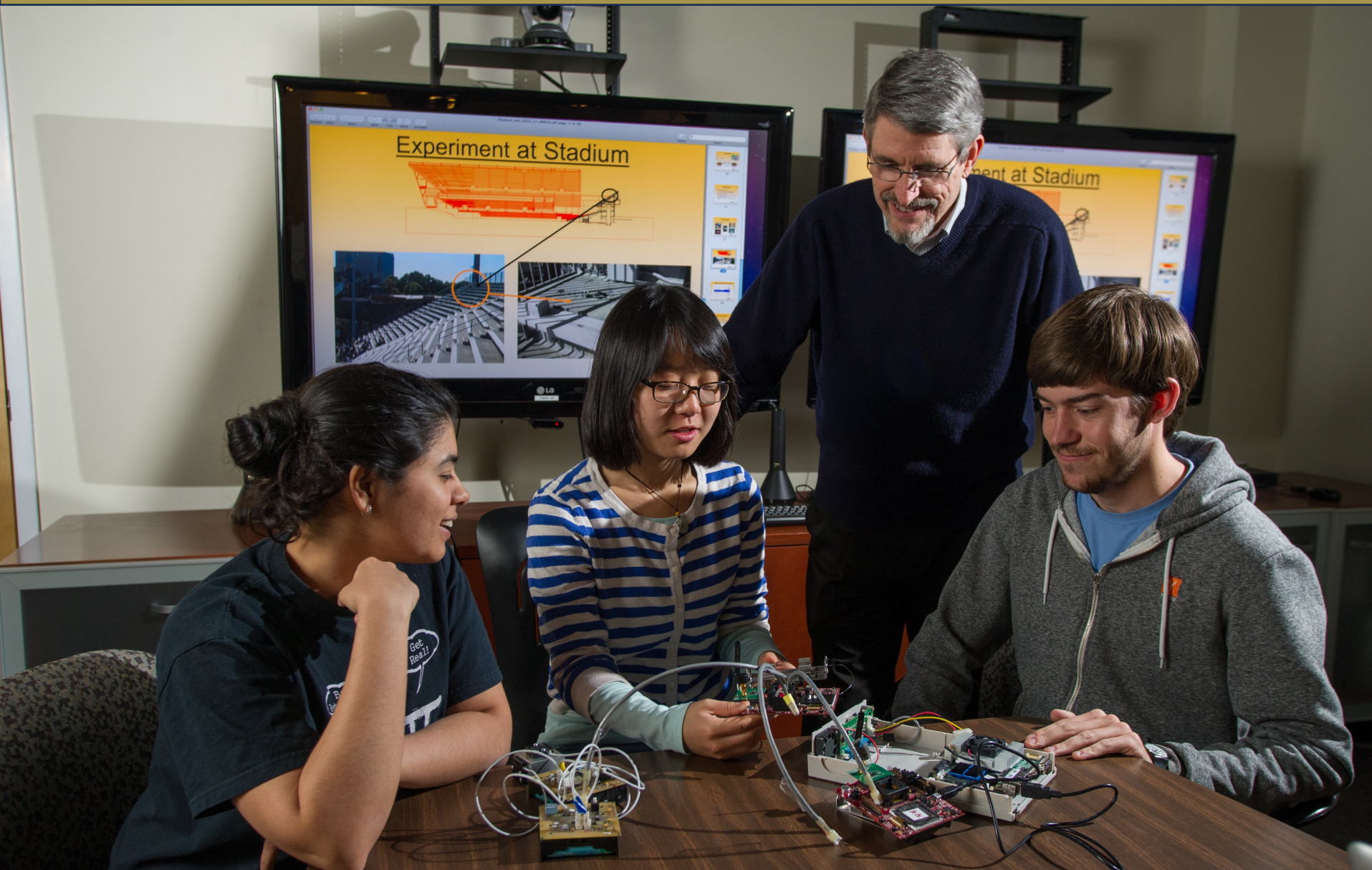


# Interactions with diverse people and ideas





# Substantive interactions with faculty and peers



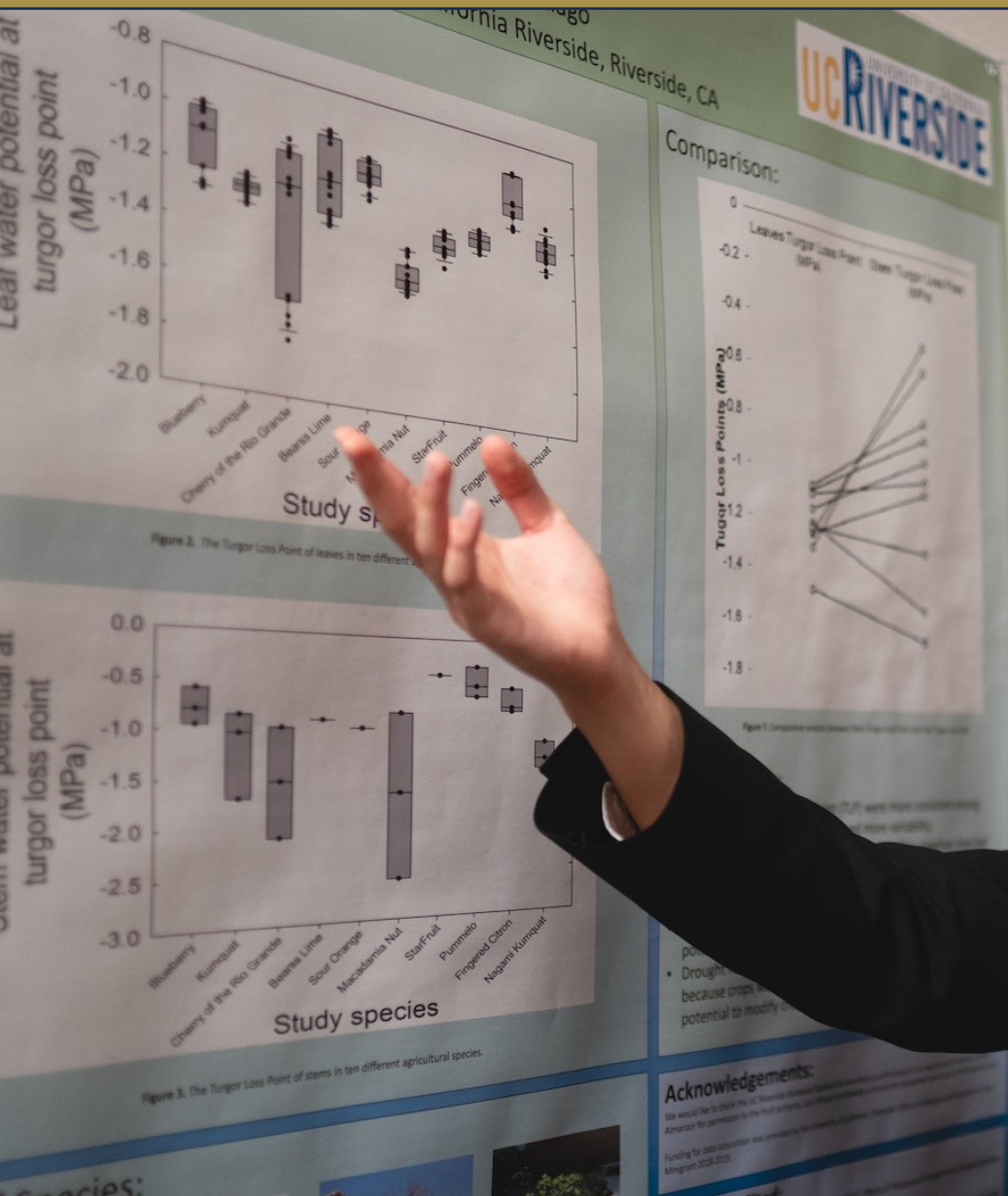


# Frequent, timely feedback





# Publicly demonstrate knowledge





# Connect learning to real-world applications



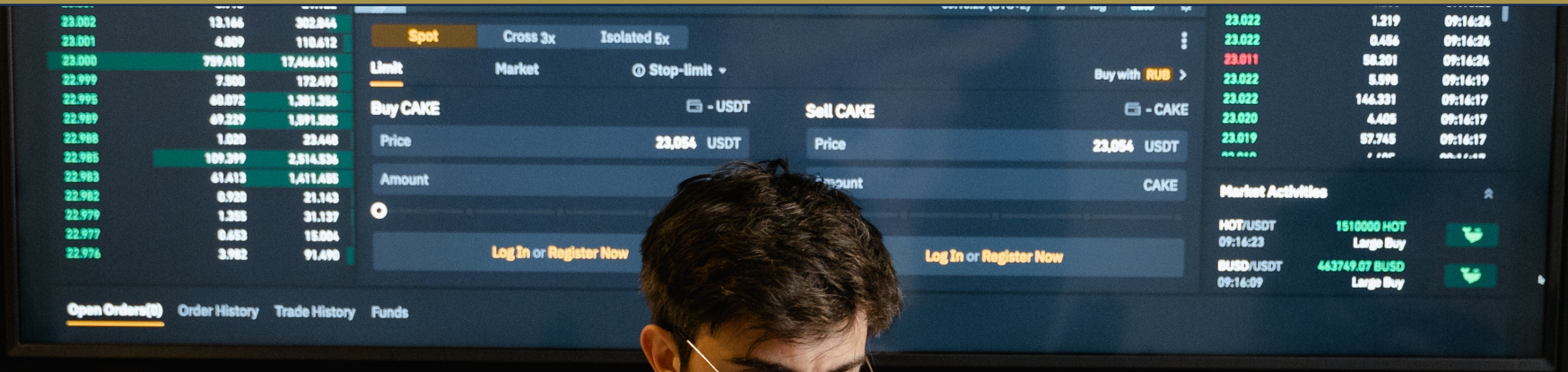


# Significant time on task





# Structured reflection and integration of learning





# High expectations, with structured support





# High Impact Practices

Which of these HIPs elements can you integrate into your teaching at Georgia Tech?

Substantive  
interactions  
with faculty  
and peers

Interactions  
with diverse  
people and  
ideas

Frequent,  
timely  
feedback

Publicly  
demonstrate  
competence

Connect  
learning to  
real-world  
applications

Significant time  
on task

Structured  
reflection &  
integration of  
learning

High  
expectations

# CTL can help you stay HIP with TTL

- Transformative Teaching and Learning workshops and faculty grants
- Teaching with the UN Sustainable Development Goals
- Class of 1969 Teaching Fellows for Junior Faculty
- Reflective Teaching Badge to document transformative teaching
- Online and print resources such as the Learning Environment Toolkit and the Academic Well-Being Project
- And more!

# Getting to Know Georgia Tech's Students

**Aanjan Sikal**

Undergraduate Student

**Chisom Onyia**

Undergraduate Student

**Haden Boone**

Graduate Student

**Spenser Wipperturth**

Graduate Student



**Dr. John Stein**

Associate Vice President for Student Life  
and Brandt-Fritz Dean of Students Chair

A vintage open-top car, likely a 1920s model, is parked on a grassy area. The car is light-colored with a dark top and has "GT" written on its side. In the background, there is a large, multi-story brick building with many windows, partially obscured by trees. The entire image has a light green overlay with a subtle pattern of small dots and larger, faint geometric shapes on the left side.

# 15-Minute Break

# Student Experience

Breakouts:

Two 20-minute sessions

- Table 1 Student Well-Being
- Table 2 Creating a Learning Environment for Student Success
- Table 3 Student DEI & LGBTQIA Resources
- Table 5 Undergraduate Research and VIP
- Table 6 Working with Graduate Students and Postdocs
- Table 7 Student Affairs & Students

# Faculty Governance at Georgia Tech

## Karie Davis-Nozemack

Associate Dean for Academic Programs (interim), Scheller College of Business, and Faculty Executive Board Chair



## Dr. J. Rhett Mayor

Associate Professor, Mechanical Engineering, and Secretary of the Faculty

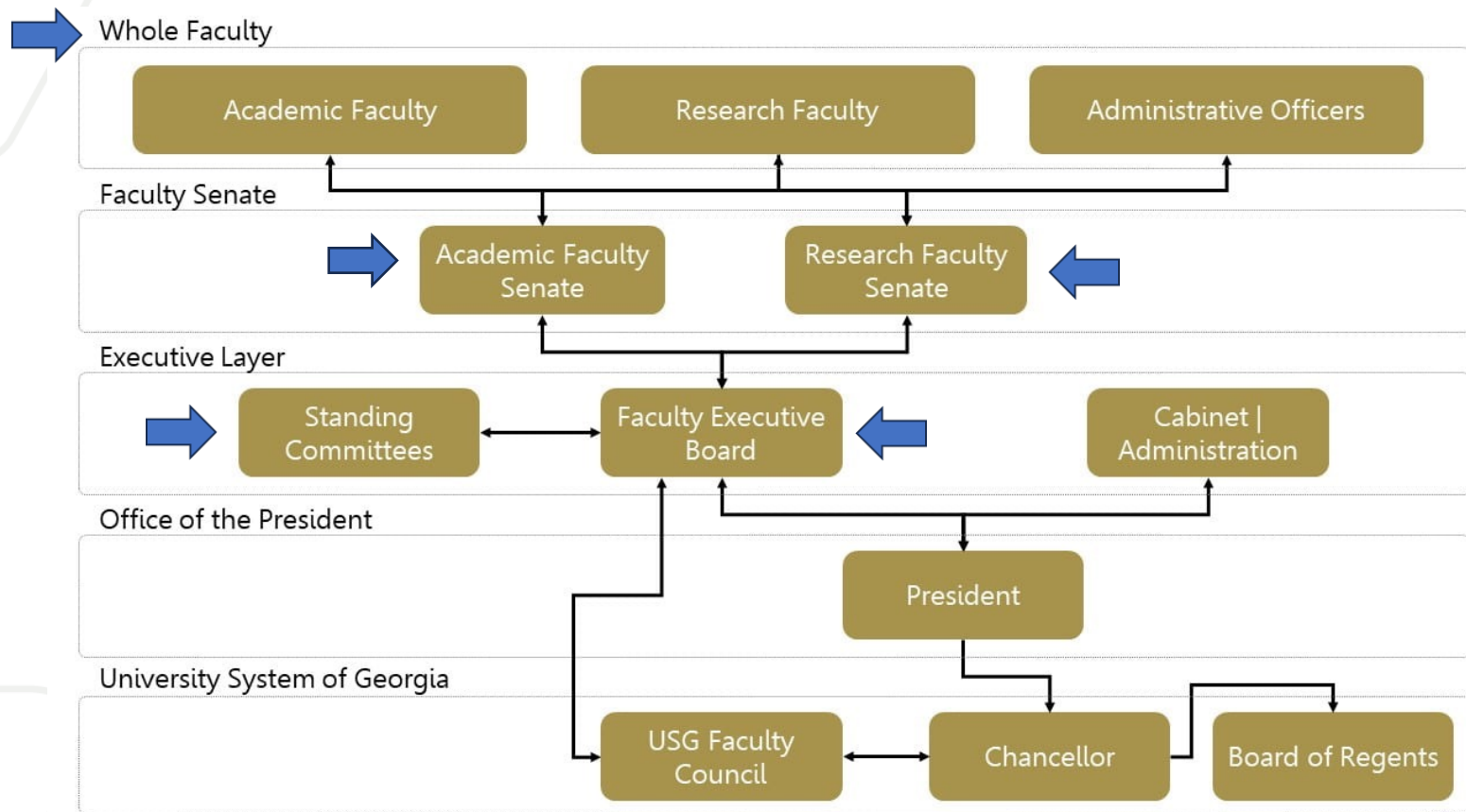


# Faculty Governance

The Faculty is granted the right and responsibility of **its own governance; the governance of Students**; the creation of such committees as may be required; the prescribing of **regulations regarding admission, suspension, expulsion, discipline, scholarship, classes, courses of study, and requirements for graduation**; and the creation of such other regulations as may be necessary or proper for the **maintenance of high educational standards.**”

GT Faculty Handbook, §2 – Faculty Governance





## Standing Committees of the Faculty

- Faculty Benefits Committee
- Faculty Honors Committee
- Faculty Status and Grievance Committee
- Statutes Committee
- Faculty Services Committee
- Welfare and Security Committee

## Standing Committees of the Academic Faculty

- Institute Undergraduate Curriculum Committee
- Institute Graduate Curriculum Committee
- Student Regulations Committee
- Student Academic and Financial Affairs Committee
- Student Activities Committee
- Student Grievance and Appeal Committee
- Student Honor Committee
- Student Computer Ownership Committee
- Academic Integrity Committee

<https://facultygovernance.gatech.edu>

# Georgia Tech Alumni Association

## Dene Sheheane

President, Georgia Tech Alumni  
Association

[Video](#)



# RESOURCES

[Office of Faculty  
Professional Development](#)

[One-on-One Coaching](#)

[Vice Provost for Faculty  
Website](#)



# New Faculty Orientation

Enjoy the reception!